

Comprehensive Plan Update



The last comprehensive plan update was done in 2005. Since the comprehensive plan is used frequently and forms the basis for all ordinances, it should be reviewed and updated every ten years. The last time the comprehensive

plan was updated, it was done with the help of a consultant. This time, the City thought it would be a good idea to begin the process with the Planning Commission. In so doing, the Planning Commission members, all of whom were new since the last update, were able to review and really understand the intent of the plan. They attempted to make it more reflective of the trends we are seeing today, and tailor it to reflect the desires of the city residents. They spent almost two years reviewing and revising the plan before holding a public hearing on August 8, 2017, wherein all residents were given an opportunity to express their opinions. Prior to the hearing, the draft revisions were posted on the internet and printed for all desiring a printed copy. All comments received during the hearing and in writing for a period of a month after the hearing are being considered prior to Council adoption of the updated Comprehensive Plan.

After adoption, the Planning Commission will begin reviewing the Zoning and Subdivision Ordinances and recommend any modifications needed to bring them into conformance with the new Comprehensive Plan. Hearings will be held on both prior to adoption of any revisions. At the same time the Zoning Map will be updated to reflect any changes in zones that are appropriate. It will be reviewed and approved at the same time the Zoning Ordinance is reviewed and approved.

The Planning Commission looks forward to working with the residents to make all revisions easily understood, and every experience with them a pleasant experience.

EAST GULL LAKE MEETINGS:

- ◆ Council: First Tuesday of the month, 6:30PM
- ◆ Planning Commission: Last Tuesday of the month, 6:30PM, no scheduled meeting in December
- ◆ Committee meetings determined as needed

Please check the City [website](#) for additional meeting information.



INSIDE THIS ISSUE:

<i>Late Summer Rains</i>	<u>2</u>
<i>Lakes Area Trail System</i>	<u>4</u>
<i>Speed Limits within City Limits</i>	<u>5</u>
<i>WW Rules to live by</i>	<u>6</u>
<i>Mayor's Message</i>	<u>7</u>
<i>Road Etiquette</i>	<u>7</u>

SIGN UP FOR EMAIL NOTIFICATIONS:

www.eastgulllake.govoffice.com

Late Summer Rains=Problems for Gull Dam Road and Ruth Lake

Gull Dam Road

During the months of August and September the US Army Corp of Engineers recorded 15.04 inches of rain for East Gull Lake. Some residents claim there was even more in their rain gauges. Needless to say, with that amount of moisture some unusual things began to occur around the city.

On Saturday September 30th at 2:00 PM, City staff notified the City Administrator that a large crack had appeared on the west side of the road near the Indian Burial mounds by the Army Corp of Engineers Campground. The ground separated approximately eight (8) inches over an area nearly 75 feet long and went from the river bed up next to the road and then back down to the river bed. The City Engineer and other local officials were consulted. It was determined the road should be closed for safety. Over the next week of

observation, it was noted the crack grew by 3 to 4 inches per day until it reached a 44-inch gap in one of the areas that was measured daily. It had also grown in length. It is interesting to note that no soil was releasing into the river and the trees were still upright on the bank.

The Corp called in their Geo Technologist to conduct soil borings in the river bank and also in the road bed to determine what was causing the problem. In the next week as the weather dried out, the bank ceased moving and has remained at a 44-inch gap.

The Corp of Engineers, Cass County and City officials are meeting on Tuesday November 7, 2017 to determine what the next step will be after the Corp evaluates the data they have gathered. It has been said that the Corp intends to begin repairs and hopefully allow us to

reopen the road before the worst of winter arrives.

In the meantime, the detour is on Gull River Road. The City encourages residents and others to observe the 30 MPH speed limit and be very careful as this road has a number of blind corners to maneuver.

Ruth Lake

Since the ice went off Ruth Lake this spring, City staff has received several calls from residents asking what can be done about the escalating high-water conditions of the lake. It has been noted by some early residents on the lake that Ruth Lake used to flow into Gull Lake. Ruth Lake currently has no outlet and is thought to be spring fed. The lake relies mainly on evaporation, which currently does not seem to be adequate for controlling water levels. Beach and shoreline erosion is occurring during windy conditions and when wave related activities take place.

After the rains in the last few months on Tuesday October 3, 2017 in the morning, a panic-stricken call was received from one of the Ruth Lake residents saying their basement was flooding. They asked if there was anything the City could do to help them. The home was visited by the

GULL DAM ROAD

CLOSURE

AND

RUTH LAKE PUMPING



Late Summer Rains=Problems for Gull Dam Road and Ruth Lake

City Administrator and Bruce Buxton, a retired engineer and member of the Planning Commission to observe the situation. The homeowners were frantically placing sandbags and pumping water to the adjoining wetland but little was being accomplished by this action.

It was discussed whether pumping water from Ruth Lake into the stormwater system on Green Gables Road should be considered. Calculations were made to determine the length of time pumping would be necessary to lower the level of the lake about six inches. Phone calls to the MnDNR were made to discuss if this could be done. MnDNR stated that a permit was needed to pump more than 10,000 gallons of water. The MnDNR hydrologist noted that if a plan was accepted by his superiors, they would issue an emergency permit. He suggested calling Cass County Emergency services to see if larger equipment to pump it was available. Eventually Ziegler Equipment was contacted and a diesel pump was rented that could pump 2,700 gallons per minute. The MnDNR and the Mayor gave verbal permission to proceed. Since the size of the lake watershed was only roughly estimated, it was decided to run the pump for 48 hours and see what accomplishment could be made for any relief in the water level.

By 4:00 PM Tuesday pumping began, fuel ran out at 2AM. At 7:30AM Wednesday the pump was refueled and pumping started again. By 4:30PM Wednesday there was an approximate three quarters of an inch lowering of the lake level. Staff reduced the throttle of the pump and ran it 24 hours. After running the pump for 24 hours, a decision was made to continue pumping for an entire week, taking advantage of the weekly rental rate and with



the expectation the lake would be lowered about six inches.

After two days of pumping the water into the street to the storm drain, complaints were received regarding walkers as they could not get through the massive amount of water on the street. City staff rented more piping to run the pipe directly to the culvert in the storm drain area. Pumping continued not-stop until Tuesday morning October 10, 2017.

Within one week the lake level was reduced by six (6) inches. After lowering the lake watershed 6" as hoped, the City decided to discontinue pumping due to the constant noise factor, inconvenience to the adjacent landowners, and cost to the City.

Since then some residents have asked about a long-term solution. MnDNR stated that if the lakeshore owners wished to install a culvert at one inch above the designated ordinary high-water (OHW) level of 1198.5 above sea level, the MnDNR would consider it, with conditions. Since the City has no plans to pump again, it is recommended that the residents around the lake, consider this option as a "neighborhood" project. Gull Lake in comparison has an OHW of 1194. With the 4.5-foot difference, it is possible to engineer a culvert and allow run off to maintain a not-to-exceed lake level which would help for the future.

To prevent invasive species from contaminating the lake through the discharge location, an air gap would have to be created on the discharge end of the pipe.



Lakes Area Trail System

Park and Trail Update

Rob Mason

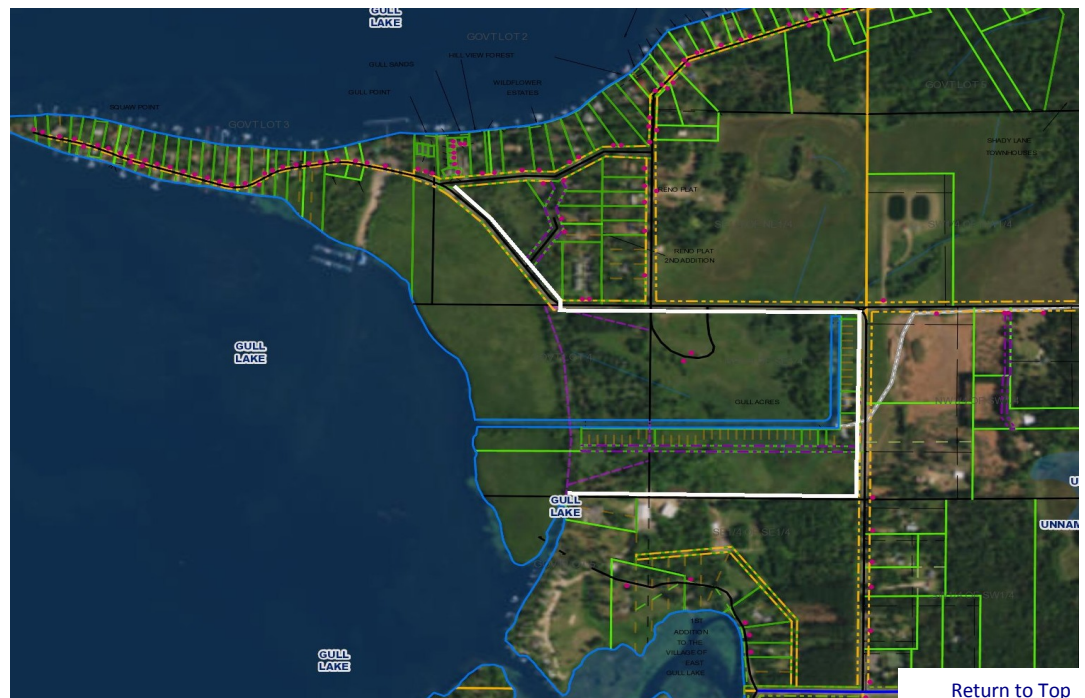
The first park and trail meeting for some time was held on Tuesday August 22nd, 2017. The committee was updated in regard to the progress of the Gull Lake Trail. The plan is to continue the trail system around the west side of Gull Lake. It will travel from the East Gull Lake trails on the south end of the lake to around the west side through Fairview Township and the City of Lakeshore. It is proposed to end at the future Lakeside Park in Nisswa.

Currently the City of Lakeshore is reconstructing County Road 77 and adding the first phase of their trail portion which will start near Sandy Point and continue to Bar Harbor. Phases two and three are scheduled for 2018 and 2019 (pending funding). The goal is 6.5 miles of trail be added all around Gull Lake.

Fairview Township is also on the trail bandwagon and has formed an aggressive trail committee that is very enthusiastic. They have secured \$180,000 in Cass County Fund-73 dollars to help in the development of an additional 7.8 miles of trail to form "The Hook" to link the north and south half of the Gull Lake trails together.

The Park and Trail committee did pass a motion to recommend to the City Council that the next segment of trail be planned. They proposed it to be built from Gull Lake Dam Road, just north of the Gull Lake Dam and head north along west side of Squaw Point Road to Hillview Forest Road. Approximately 1.16 miles of trail would be added to the existing trail system. Its takes a lot of time and effort to put together a solid financial plan and engineered route plan before any shovel digs up the ground.

GULL LAKE
TRAIL SYSTEM
TO EXTEND
AROUND WEST
SIDE OF LAKE



Speed Limits within City Limits

Speed Limits within City Limits

Rob Mason

Frequently throughout the year we get phone calls or have conversations with residents about speed limits within City limits. Because of a combination of County Roads, City Roads and Private Roads there are a number of rules we must follow.

County roads not only receive funds from the local portion of your taxes from the County taxes you pay, but they also receive state funds. Because of the state funds from MN DOT (Minnesota Department of Transportation) there are a number of rules we must abide by. One rule is that MN DOT sets the speed limits. We asked MN DOT via Cass County for a traffic study for County Rd 77 and County Rd 70 within East Gull Lake. Both roads are

major roads and have a substantial amount of traffic each day. The study was conducted in 2016 and concluded that the average speed traveled would not allow us to reduce speeds from the standard 55 mph. The Cass County Engineer Dave Enbloom at that time suggested we put up some yellow advisory signs suggesting a safer speed based on conditions. These signs are on dangerous curves and intersections, icy conditions, and in our case resort zones. Cass County has now installed 45 mph advisory speed signs on County Rd 77 from near the Legacy Golf Course to just beyond Madden's Resort. You will see a number of yellow signs over approximately a 1-mile stretch of road.

City roads are limited to 30 mph. There are still some 20 mph signs that were installed many years ago on

some city roads which we still maintain. Private roads can be posted in any manner and 20 mph seems to be the minimum.

In conclusion, we have many roads that don't meet the city standards, however conditions and topography make the possibility of improving them very difficult, if not impossible. Residents like their trees and after losing many in the recent storms, I can't blame them. Disposing of stormwater is also important but some areas are very difficult or impossible to modify without causing a great deal of stress to homeowners.

Please drive carefully among our roads as we have wildlife, children, and many hiking and biking visitors and residents that also share the roads with you.

**SPEED LIMITS
ON CITY ROADS
ARE 30 MPH**



Wastewater - Rules to Live By



By Kathy Schack
How many of you have seen the commercial for a toilet boasting the ability to flush golf balls? How ridiculous! Whether you have a private system or are connected to the City Wastewater system, you must realize that there are consequences for flushing anything but biodegradable solids. Our wastewater technicians have found unbelievable items stuck in the City Wastewater grinder stations that have apparently been flushed down toilets. Just recently they spent hours fixing a grinder that had tried to grind a pair of underwear where the elastic wrapped around the grinder and caused it to jam.

**UN-FLUSHABLES
AND
WHAT NOT TO
PUT DOWN YOUR
DRAIN**

Another issue is grease.
“GREASY FOODS TO AVOID
PUTTING DOWN THE KITCHEN
DRAIN:

- Meat fats
- Lard
- Cooking oil
- Shortening
- Butter and margarine
- Food scraps
- Baking goods
- Sauces
- Dairy products

Grease sticks to the insides of sewer pipes (both on your property and in the streets). Over time, the grease can build up and block the entire pipe.” Never pour grease down sink drains or into toilets.

“We often don’t realize the harm we are doing by what we rinse down our kitchen sinks, bath and shower drains.”

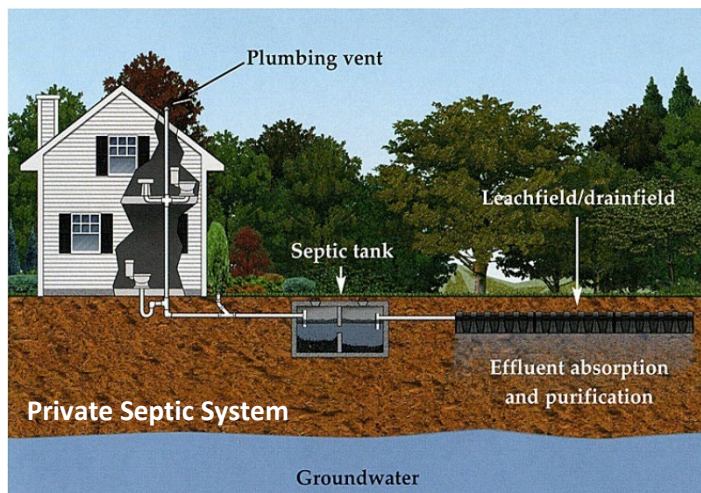
~[Care2 Healthy Living](#)



Wastewater Alarms

Do you ever hear wastewater alarms going off in the neighborhood?

A check valve allows flow in one direction and automatically prevents back flow (reverse flow) when fluid in the line reverses direction. When grease accumulates on the check ball, it sometimes gets stuck in the open position, causing the alarm to go off. If the alarm is left unchecked, it can allow backflow into the inlet pipe and may cause a wastewater back-up into the drain pipes in the house.



Mayor's Message

With winter coming, focus on snow removal comes to the forefront of our minds. Please be cognizant of the need to leave room for the snow plows to access right-of-way along city streets. Placing stakes along your yards is accepted, but please keep these stakes set back at least three feet from the edge of the pavement to allow snow plows to wing back the snow effectively.



Have a wonderful winter season and drive safely.

Road Etiquette

Road Etiquette

By Carol Demgen

Stay alert for pedestrians.

It is illegal to pass another vehicle that has stopped for a pedestrian. A violation of pedestrian right-of-way law is a misdemeanor and a second violation within a year is a gross misdemeanor.

Pedestrians should walk on the left side of the road, facing oncoming traffic.

Sharing the road with bicyclists.

Bicycles are legal vehicles on MN roads. They share the same rights and responsibilities as other vehicles.

Use caution when passing a bicycle, the law requires at least three feet between the side of the car and the bicyclist; it is acceptable to cross the centerline except when in a no-passing zone.

Rules for bicyclists:

- Ride in the same direction as the flow of traffic
- Signal turns, using same hand and arm signals as vehicle drivers
- Travel to the right of faster moving traffic
- Are allowed to ride two abreast as long as traffic is not impeded
- Are encouraged to wear helmets
- Are required to be equipped with legal lights and reflectors when riding at night



STAY ALERT FOR

PEDESTRIANS

SHARE THE ROAD

WATCH FOR

SCHOOL BUS

LIGHTS

School Bus information

In six years, Minnesota drivers have been cited nearly 9,000 times for violating school bus stop arms. We have buses that travel our roads in East Gull Lake – Remember to stop at least 20 feet from the school bus displaying red flashing lights and a stop arm. This applies to those following and those approaching from the opposite direction. As of August 1, 2017, drivers who violate this law will face a fine

