



CITY OF  
**EAST GULL LAKE**  
 GREEN TREES. BLUE WATER. GREAT PEOPLE. *Minnesota*

2024  
**NEWSLETTER**

**Investing in East Gull Lake**

**\$9.2 million of outside funding invested into City of East Gull Lake**

After being awarded over \$4 million in funding from various state and regional sources to implement a variety of road, bridge, trail, and wastewater projects, the common theme in the City of East Gull Lake in 2024 has been ‘construction’.

In addition to the City’s initiatives, Cass County has also been busy with projects throughout the City including a mill and overlay of County Road 77, pavement reconditioning of CSAH 18, resurfacing Gull Lake Dam Road and East Gull Lake Drive and road realignment project for County Road 70. The realignment project, which includes construction of two roundabouts and bridge, received approximately \$5 million in federal funds.

In total, approximately \$9.2 million of funding secured from sources outside the City and County have been, or will be, invested in East Gull Lake in 2024 and 2025. Many of these include:

- The City secured \$2.9 million in state bonding monies for the wastewater consolidation project.
- The City was awarded \$781,200 through the MnDOT Transportation Alternatives program for trail construction.
- The City was awarded \$353,000 in state bonding monies for park and trail improvements.
- Cass County was awarded roughly \$5 million of federal funds to complete the new segment of County Road 70.
- The City was allocated \$100,000 from Cass County Fund 73 to help implement a trail along the new segment of Co. Road 70.
- The City was awarded \$70,000 from Sourcewell for various improvements and consultant reimbursement.

**The City thanks its’ partners and residents for their support!!**

*Find out more about the City’s efforts in the following pages.*

**FEATURED**

East Gull Lake Boasts First Water/Wastewater Apprentice in State of Minnesota



**INSIDE THIS ISSUE**

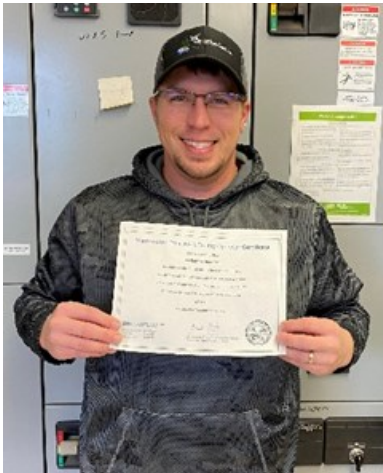
- 2 - Wastewater Apprentice
- 3 - Consolidate Project
- 4 - Consolidate Project
- 5 - City Hall Shortfall
- 6 - Road Projects Update
- 7 - Deer in East Gull Lake
- 8 - DNR Information—Deer
- 9 - Trail Project Update
- 9 - GCOLA in the News
- 10 - FOG’s and City Sewer
- 11 - Construction Safety
- 12 - Construction Patience

East Gull Lake City Hall  
 10790 Gull Point Road  
 East Gull Lake, MN 56401  
 (218) 828-9279



## MN Rural Water Apprentice – Lee Anderson

**Lee Anderson, a Public Works Technician with the City of East Gull Lake, is the first apprentice in the water/wastewater industry in Minnesota.**



Lee started his journey in the Minnesota Rural Water Association wastewater apprentice program October of 2021. This national program was newly approved through the Department of Labor and Industry and the Minnesota Rural Water Association in May 2021.

As with all apprenticeship programs, this involved On-Job-Training (OJT) and Related Technical Instructions (RTI). The program takes approximately two years or more to complete. Over this two-year period, the program is broken down into 4 cohorts (6 months sections). Lee logged a total of 4167.5 On-Job-Training hours ranging in a diversity of tasks and skills.

During his time in the apprentice program Lee got to show off his talents. Featured on the right is a picture of Lee teaching a neighboring community how to service one of their air/vacuum release valves. Lee has had a lot of experience maintaining this equipment, as East Gull Lake has several in their wastewater collection system. The air/vacuum release valves are a critical piece of equipment to have pumps work efficiently and to their design parameters.



The second component to the apprentice program is the Related Technical Instruction (RTI). Over the two-year period Lee logged 309 hours of instructional time including taking 150 quizzes. Lee's dedication to the training really paid off. Over the two-year program Lee took his Class D & Class C wastewater exams with the Minnesota Pollution Control Agency (MPCA). Lee was able to pass these exams on his first attempts.

In July of 2024, at an East Gull Lake City Council meeting, Lee was presented his apprenticeship certificate and card.

Well done Lee!

*Joel Jasmer*

*MRWA: Apprenticeship Coordinator*

## Consolidate Treatment Project Update

Construction is well underway to complete the Wastewater Treatment Facility (WWTF) consolidation project.

### Background...

The City currently operates two wastewater treatment facilities (WWTF) on both the northern and southern ends of the City. A detailed facility report and long-term financial projection of the wastewater system showed necessary upgrades to the aging north plant would be more costly versus the alternative to reroute wastewater from the north end of the City, to the City's southern, upgraded Pine Beach WWTF. As result of this project, the wastewater will receive treatment of phosphorus and other parameters in a more efficient and technologically advanced facility.

The Pine Beach WWTF has the capacity to serve and treat all the north wastewater plant volume with residual volume for City growth.

### Project highlights...



The City was awarded **\$2.9 million** in state bonding which is projected to cover over ½ of the total estimated project cost.

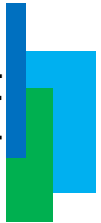


The City secured a **\$2.2 million** dollar low interest loan through the Clean Water Revolving Fund which is administered by the Minnesota Pollution Control Agency and the Minnesota Public Facilities Authority (PFA) to finance the remaining cost of the infrastructure project.



Construction is underway with project **completion estimated in 2025**.





## Consolidate Treatment Project Update

### Progress in 2024

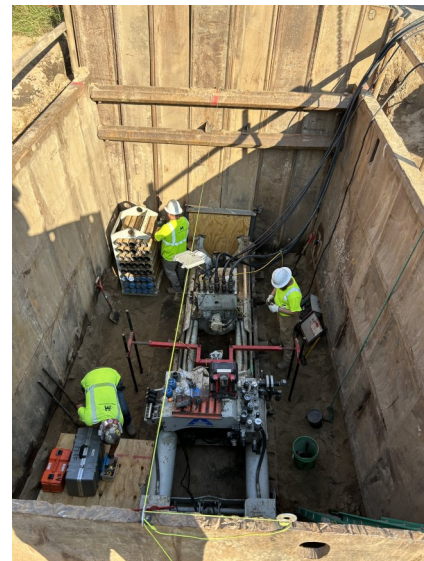
With final plans and specifications in place, the City solicited bids for the project in the winter of 2024. TNT Construction Group was awarded the contract to execute the improvements. These upgrades include a full rehabilitation of Lift Station 1 at the intersection of Green Gables Road and Hillview Forest Road, the directional drilling of 6- and 8-inch forcemains from Lift Station 1 to the South Pine Beach facility, construction of an intermediate lift station on County Road 70, installation of a flow meter at the South Pine Beach facility, and the decommissioning of the North Gull Point Wastewater Treatment Facility.



Throughout the summer of 2024, TNT Excavating has been actively working on the project, focusing primarily on the directional drilling of new forcemains. In early October, they commenced work on the intermediate lift station and began installing air release valves and cleanout manholes along the new forcemain route. Planned tasks for the remainder of this

construction season include the majority of the improvements to the intermediate lift station, placement of manhole structures with air release and cleanout components, and connecting the forcemain from Lift Station 1 to the South Pine Beach facility.

The City has been closely coordinating with Cass County on their realignment and improvements to County Road 70, as the new forcemain runs alongside the road's new alignment. A key element of the project, the installation of the new forcemain under the Gull River, has been delayed due to the ongoing surcharging process at the river. Surcharging involves placing fill material on unsuitable soil to consolidate it under the weight of the fill, which ensures the ground is stable enough for further construction. The concern is that installing the forcemain before the surcharge process is complete could damage the pipe, leading to further complications.



As the City's project is dependent on the progress of the County's surcharging efforts, the substantial completion of the project has been pushed back to spring/summer 2025.

Once the new forcemain under the Gull River is completed, work at Lift Station 1 will resume, and startup and commissioning of both lift stations will follow. The decommissioning of the North Gull Point facility is expected to take place in summer 2025, with final project completion, including punch list items, anticipated in fall 2025.

## *Serving our City - City Hall Shortfall*

---

Originally built as a one-room schoolhouse in 1932, East Gull Lake City Hall is showing its' age at 92 years old. What once was a great space for local grade school children who, as some would explain, "walked up hill both ways to school", is no longer meeting the need for the buildings current intended use.



The timeworn structure poses numerous issues. A lack of functionality has become a secondary concern to potential health and safety risks.

Years of elemental pressures have compromised much of the buildings exterior and interior structure. Water can be found leaching into and ponding in the building's basement. Uneven floors, warped stairs, crumbling walls, rotting materials, and cracking and chipping concrete are a few items named off a long list of structural issues. The photos below speak volumes representing just some of these problematic areas.

Health hazards are a major concern. Areas of the building have tested positive for molds and asbestos. At times rodents can also be heard scampering through the ceilings. Abatement of these issues, alone, have been quoted at over \$100,000.



As if potential safety and health issues aren't enough to warrant construction of a new facility, functionality and lack of space then come into play. With no separate meeting space from areas where populus enter the building or separation of working space, staff, and those they are attempting to serve are subject to continuous interruption and are without privacy they seek. The dysfunctional work space also lacks room for the staffing growth that is evermore demanded by the community.

With invaluable input from members of the community, the City has begun planning efforts towards construction of a new City Hall facility. Through these thoughtful, foresighted efforts, our staff and community will be provided a facility that is safe and functional in order to meet the needs of East Gull Lake well into the future.



## Road Projects Update

---

As part of the City's road rehabilitation program, improvements were recently completed on Pine Beach Peninsula Road and Birch Grove Road.

Pine Beach Peninsula Road was officially transferred to the City by Cass County, making the City responsible for its future ownership and maintenance. As part of the transfer agreement, Cass County contributed \$177,500 for the road's resurfacing. The project involved a 2-inch mill and overlay of the existing pavement and widening the roadway to include two 10-foot travel lanes and an 8-foot shared-use trail for pedestrians and golf carts, which frequently use the road. The City is currently exploring additional enhancements, such as signage and pavement markings to highlight the shared-use trail, potential advisory speed limits, and markings to indicate that the trail is designed for multi-directional traffic.



Birch Grove Road underwent improvements as part of a joint project with Crow Wing County, focusing on the shared north-south portion of the road between the City of East Gull Lake and Crow Wing County. The City extended the pavement overlay from this shared section around the curve to the west, ending at the dead end. A 2-inch overlay was applied to the entire stretch of Birch Grove Road to improve surface quality and ride comfort.

Both the Pine Beach Peninsula Road and Birch Grove Road projects are substantially complete, with only minor tasks remaining, such as addressing small topsoil washouts and finishing restoration work on the shoulders.



## Winter Preparations

---

In preparation for plowing snow, residents often place stakes to outline driveways and sidewalks. Stakes that protrude into the road right of way can be broken off by the plows clearing city streets and may even cause damage to the plows. Please maintain at least eight feet of setback when placing stakes from the edge of city streets so plows are allowed adequate space to push snow off the roads.

Thank you for your help in allowing our plow drivers to safely maintain roadways!

## “About the Deer Out There...”

*Janell Madison*

*City of East Gull Lake, Resident*

We see deer often in our community. We admire their grace and beauty, smile when we see white dots on fawns in the spring and summer, and hope deer don't cross in front of us as we drive, especially on dark and icy winter roads.

Every November, blaze orange becomes fashionable for many Minnesotans. We see it in stores as people load up their carts with hunting supplies and snacks, and we catch glimpses of orange through the trees.



Dressing in blaze orange is just one of the many rules deer hunters must follow. Other rules keep both hunters and non-hunters safe during deer hunting season, like the locations where people can hunt and the times of day. Hunters need a deer license to hunt and should read the regulations booklet that is updated and published yearly. These booklets are available online and wherever hunters buy deer harvesting licenses.

**While the main focus of deer hunting season is usually on the hunters in November, both hunters and residents have a year-round responsibility.**

The Department of Natural Resources (DNR) has rules to help keep deer healthy, and we are obligated to follow them; otherwise, the herd could face illnesses and diseases. While we all care about deer and other animals, it is important to know that deer are not pets. They are animals meant to forage for food and teach their young how to find food.

Feeding and attractant bans are in place across the state to prevent concentrations of wild deer in areas with a higher risk for disease. These bans are precautionary steps the DNR took after deer that tested positive for chronic wasting disease were found both in the wild and on deer farms.

- Deer feeding includes: placement or distribution of grains, fruits, vegetables, nuts, hay and other food that is capable of attracting or enticing deer.
- Deer attractants are: natural or manufactured products that are capable of attracting or enticing deer.

People who feed birds or small mammals must do so in a manner that prevents deer access. Place the food at least six feet above ground level. Food placed as a result of normal agricultural practices is generally exempt from the feeding ban.



## What's the harm in feeding deer?

The DNR outlines several reasons why feeding deer can be harmful:

### Disease

- Supplemental feeding can closely congregate animals that would otherwise feed apart on natural foods. Right concentrations of deer may dramatically increase the odds that an infected animal will spread harmful bacteria.

### Enterotaxaemia

- It is not uncommon for wintering deer to eat themselves to death despite having reserves of fat. Supplemental feeding can result in enterotaxaemia, a fatal disease commonly called grain overload.

### Auto Accidents

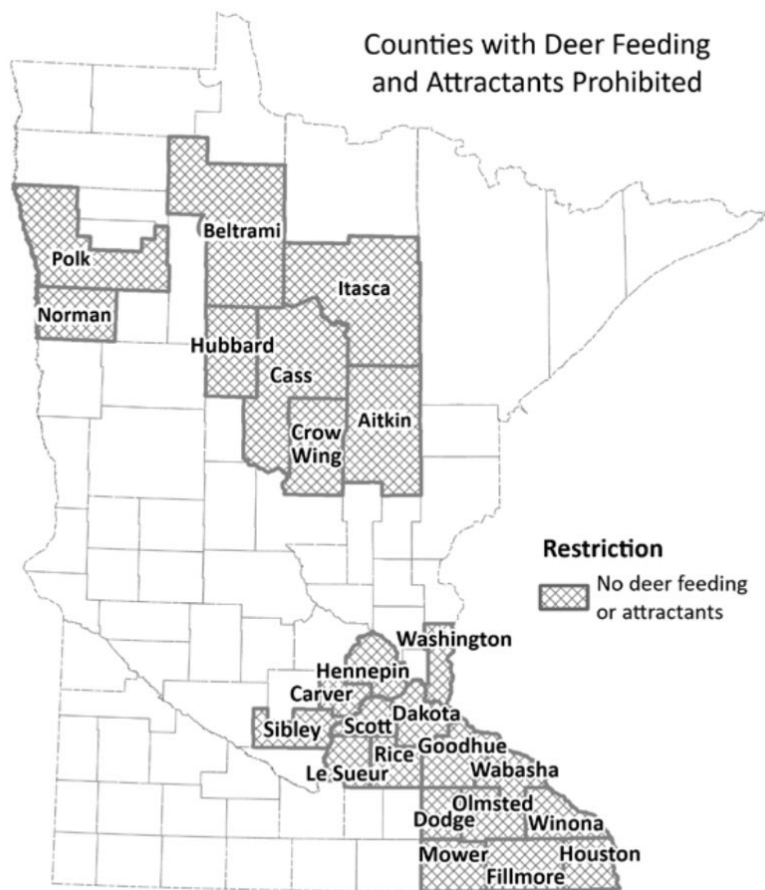
- Supplemental feeding often draws animals away from their natural feeding and bedding areas to locations where they create traffic accidents.

### Habitat and Crop Loss

- High Concentrations of deer can retard forest regeneration, change plant species composition and cause significant crop depredation.

### Behavior Changes

- Supplemental feeding can make wild animals less fearful of humans, delay winter migration and even result in starvation if animals have not migrated to wintering areas and feeding ceases.



Deer feeding and attractants are banned in Cass County.

Feeding deer makes them less wild, more vulnerable to disease and subject to population increases above what the available natural habitat can support.

Source: Minnesota Department of Natural Resources website ([dnr.state.mn.us](http://dnr.state.mn.us))

**Please do your part to keep East Gull Lake a safe and healthy community!**

## Trail Project Update

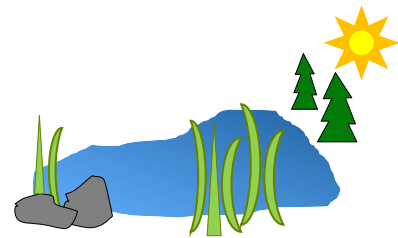
---

The City has been awarded \$781,200 in federal funds through the Transportation Alternatives (TA) program to extend the Gull Lake Trail from Gull Point Road. This new section of the trail will begin south of the Gull Lake navigational channel, near the Harbor Development, and head west before turning north to cross the channel via a bridge. The trail will then continue to the intersection of Gull Point Road, where it will cross and proceed north along the east side of the road until reaching Hillview Forest Road.

As part of the federal funding requirements, the City is responsible for covering 20% of the construction costs as well as all engineering expenses related to project development.

The project has recently gone out for bids, and the City Council will soon review the received bids for approval and award. Landwehr Construction has emerged as the apparent low bidder. Construction is tentatively set to begin this fall, with a likely pause during the winter. Work will then resume in spring 2025, with the project expected to be completed by summer or fall 2025.

*Paul Sandy, WSB  
City of East Gull Lake, Engineer*



## Gull Lake Stewards

---

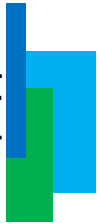
It's no secret....Lake Steward, an award for lake shore owners for protecting lake water quality, is now statewide and started right here in 2019 with the Gull Chain of Lakes Association! Last summer, Lake Steward publicity in our local news was picked up by CBS affiliate WCCO, who sent a crew from Minneapolis up to East Gull Lake to see how the Lake Steward Award was influencing lake shore owners.



Lake Steward has a simple message for lake shore owners: Let plants grow near the lake by stopping mowing! You can still enjoy a lawn, but shoreline plants absorb runoff and prevent algae growth in lakes. Less work and cost for you, enjoy cleaner lake water for all. And earn the Lake Steward Award! To take the first step to be a Lake Steward, take the [Lake Steward Quiz](#), 4 questions that take 3 minutes to complete.

Pictured on the left is the John Macklin Family, GCOLA's first Lake Steward awardee!

*Dorothy Whitmer  
Co-Chair, Lake Steward of GCOLA*



## A Note From The Public Works Director

---

Hello again,

I wanted to have a short discussion about a problem that is occurring throughout our sanitary sewer system: **FOG**. What is FOG? FOG refers to fats, oils, and grease that enters the sewer system when poured down the drain in homes and/or restaurants.

Why is **FOG** a problem?

- ⇒ FOG can build up over time and clog sewer pipes. This can lead to sewage back-ups in homes or businesses.
- ⇒ FOG can accumulate in grinder stations (the equipment used to pump wastewater from your home to the mainline). This can lead to mechanical issues or alarms.
- ⇒ FOG leads to floating grease mats in the main lift stations throughout the City. This can also lead to mechanical issues and alarms. This requires increased lift station maintenance and cleaning to keep the stations clean and running effectively.



Where can **FOG** be found?

- Butter
- Gravy
- Salad Dressing
- Fats and oils from cooking a variety of meats
- Cooking oil



How to prevent **FOG** from entering the sewer system?

- Do not pour oil and grease down the drain. Instead use a paper towel to clean the dishes prior to rinsing. Another alternative is pouring used cooking oil into a disposable container. Let the oil cool and dispose of later in a trash can.
- Remember to use a sink strainer while washing dishes to catch food scraps.
- Put food scraps in the trash.
- Restaurants: Please make sure that the grease traps or grease interceptors are cleaned and maintained frequently.

I would also like to note, for homeowners connected to the City's municipal sewer system, it's a good idea to check your homeowner's insurance policy to make sure you are adequately covered in case a sewer backup occurs. Some policies do not cover this occurrence unless an additional rider is purchased.

If you have any questions or concerns, please give me a call.

Thank you helping us with this issue,

*Matt Poythress*  
*Public Works Director*  
*Mobile: 218-821-1540*  
*Emergency: 218-330-7519*

## ***Keys to Successful Construction Projects***

---

As our community continues to grow and improve, construction projects have become a familiar sight. From road repaving and utility upgrades to the development of new public spaces, these projects are essential to maintaining and enhancing the quality of life in our City. However, we understand that construction can bring temporary disruptions, and we want to remind everyone that patience and safety are paramount during these periods of improvement.

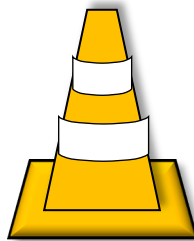
# **SAFETY**

### **Staying Safe in Construction Zones**

Construction zones can be hazardous, with heavy machinery, altered traffic patterns, and workers on-site. To ensure everyone's safety, it's important to follow a few key guidelines:

- ⇒ **Obey Traffic Signs and Signals:** Detours, reduced speed limits, and flaggers directing traffic are there for your protection. Always follow posted signs and directions to safely navigate through or around construction zones.
- ⇒ **Slow Down:** Speeding in construction areas is one of the leading causes of accidents. Slowing down gives you more time to react to changes in road conditions and ensures the safety of workers and other drivers.
- ⇒ **Stay Alert:** Construction zones are unpredictable, with changing lane configurations, narrowed roadways, and equipment entering or exiting the area. Stay focused, avoid distractions like texting or using your phone, and be aware of your surroundings.
- ⇒ **Watch for Pedestrians and Workers:** Many construction projects occur near neighborhoods or busy areas. Keep an eye out for pedestrians, cyclists, and workers who may be present in or near the construction zone.

## **Safety + Patience = Long-Term Improvements**





## Keys to Successful Construction Projects

---

### Patience Makes a Difference

We understand that construction can lead to inconveniences such as delays, detours, and noise, but the benefits far outweigh the temporary disruptions. New roads, better infrastructure, and improved public facilities are all designed to serve our community better in the long run. Here's how your patience helps:

- **Shorter Project Times:** By following signs, respecting detours, and being mindful of construction areas, you help reduce accidents and allow workers to complete their tasks more efficiently. This can shorten the overall project timeline, getting everything back to normal faster.
- **Better Results:** When workers have a safe environment and the public is cooperating, the quality of the work is often higher. Rushed or unsafe work environments can lead to mistakes that may require repairs in the future, causing additional disruptions.
- **Community Improvement:** Every construction project is aimed at making our City a better, safer, and more enjoyable place to live. Your patience during these times ensures that these improvements can be made effectively, benefiting everyone.

# PATIENCE

### Final Thoughts

As construction continues around our community, we ask that all residents and visitors practice caution, patience, and courtesy. The temporary inconveniences will soon be replaced with long-lasting benefits for us all, from smoother roads to safer infrastructure.

Thank you for your cooperation and commitment to making our City a safer and more vibrant place to live!

*Paul Sandy, WSB  
City of East Gull Lake, Engineer*





## 2024 Newsletter

### Your Local Leaders

---

#### CITY COUNCIL

**MAYOR** Dave Kavanaugh

**COUNCIL MEMBER** Jim Ruttger

**COUNCIL MEMBER** Scott Hoffman

**COUNCIL MEMBER** Carol Demgen

**COUNCIL MEMBER** Tim Bergin

#### PLANNING COMMISSION

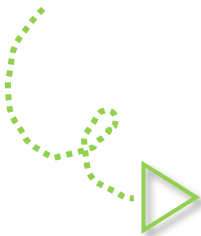
**CHAIR** Paul Tollefson

**VICE CHAIR** Gene Bridges

**MEMBER** Marty Halvorson

**MEMBER** Rocky Waldin

**MEMBER** Albie Kuschel



---

**Contact City Hall to sign up for paperless billing for City sewer services**

218-828-9279

10790 Gull Point Road  
East Gull Lake, MN 56401

---